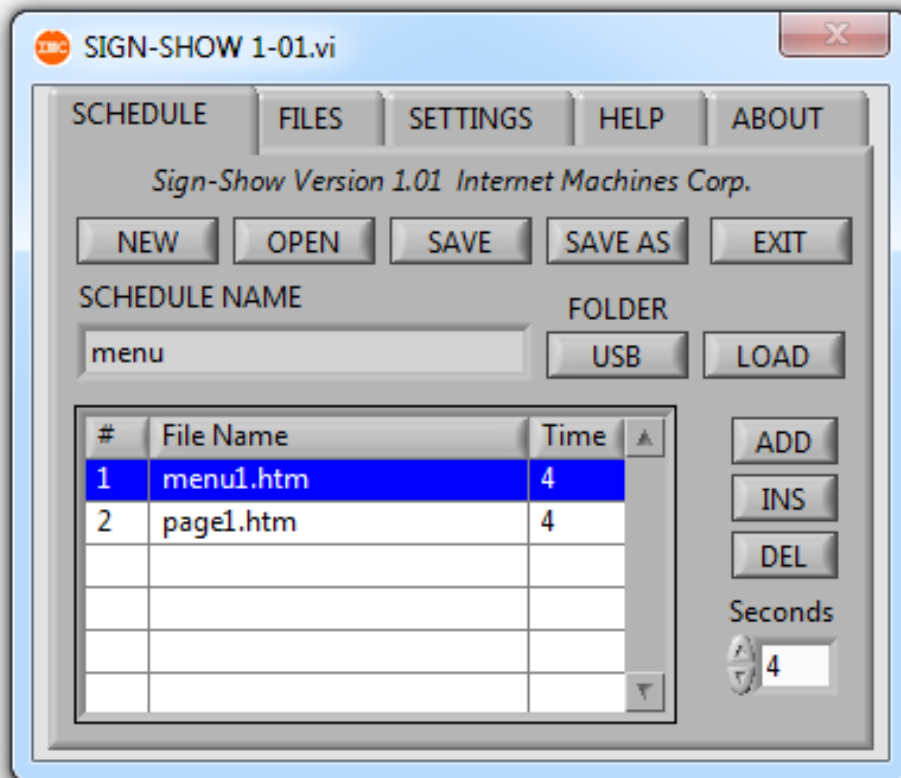


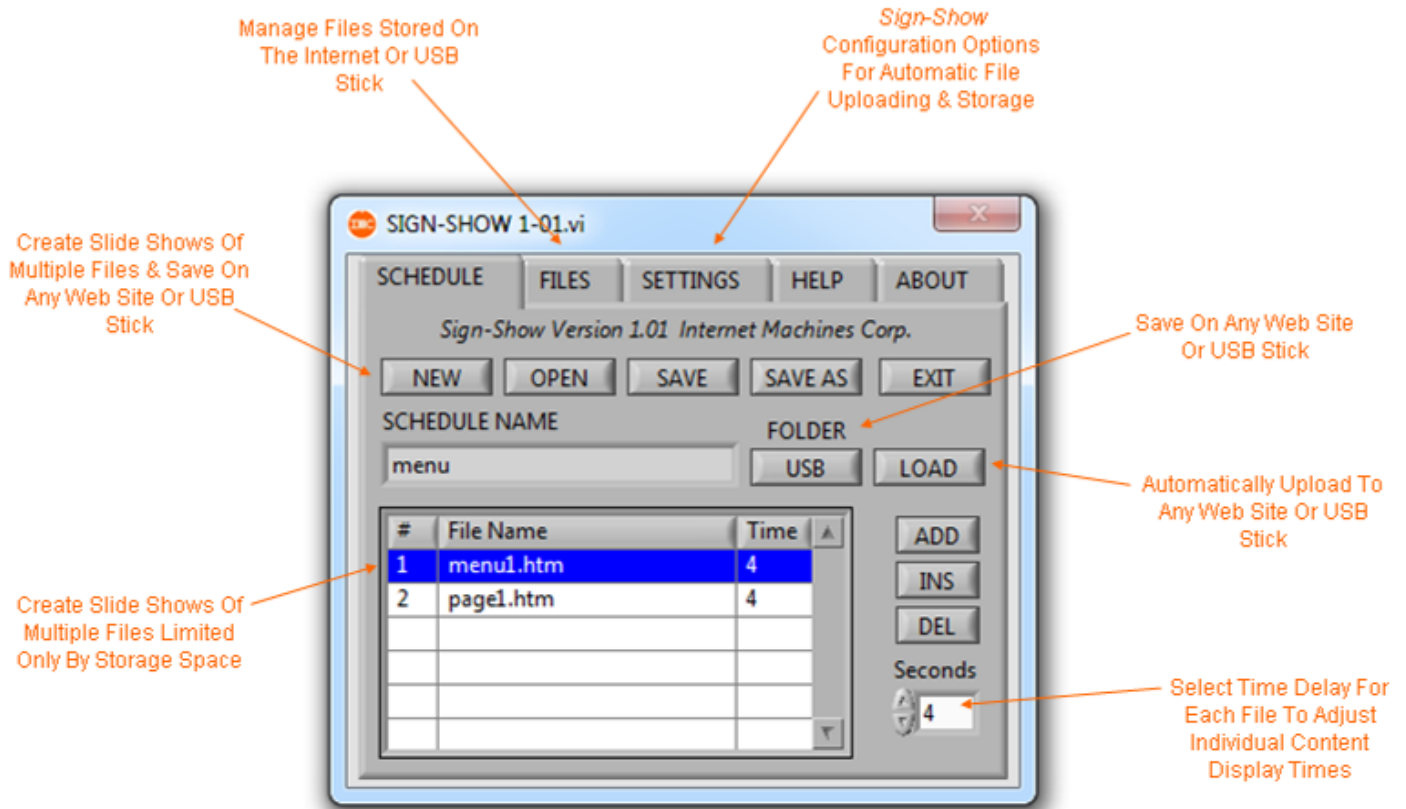


Internet Machines Corp.

Sign-Show Software



User's Guide
Version 1.01 4/14



Index:

- i. Introduction
1. Installation
2. Sign-Show Slideshows
3. File Maintenance
4. Internet & USB Storage

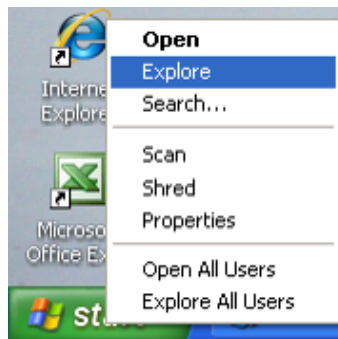
i. Introduction

The IMC SignAll Display System is designed to allow users to quickly and easily create and edit signs, menus and advertising displays on Hi-Def TVs. Users can create content with word processor apps, including text, graphics & pics and store files on any web site or the USB stick included with your SignAll System. This User's Guide describes the IMC Sign-Show software application functions and features. It is recommended that you become familiar with the information provided in the SignAll Display System User's Guide and the IMC Templates User's Guide prior to using the Sign-Show software app. The Sign-Show software app. is designed to provide user's of the SignAll Display System with the ability to create continuous slide shows of their files and easily store files on an internet server or USB stick. Slideshows consisting of multiple files can be uploaded to an internet server, or stored to the USB stick, with a single click. Sign-Show automatically modifies your files to re-direct the SignAll Display System to the next file after the user selectable time period and back to the first file in the list, re-starting the process and continuing indefinitely. Sign-Show works with the IMC SignAll Display Templates, any word processor document saved as a web page (.htm) or any HTML file. For additional information or to inquire about IMC hosting and management services please contact IMC.

1. Installation

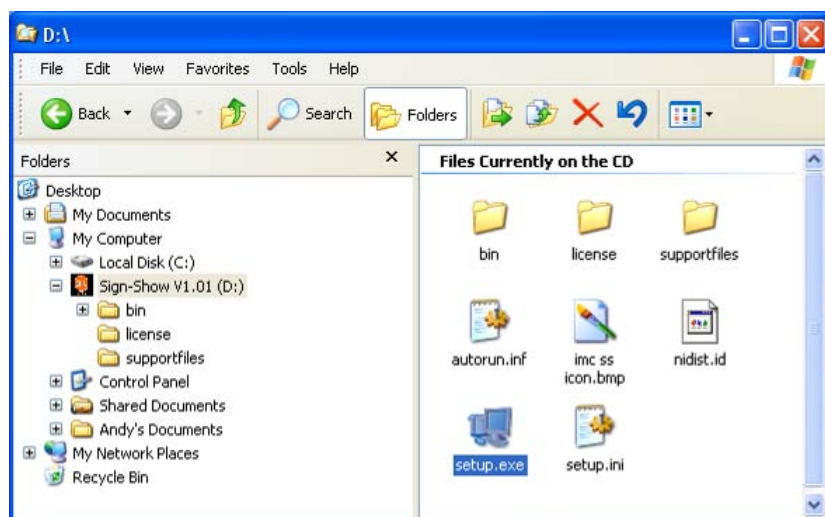
IMC's Sign-Show software app. Is currently available for computers using Windows Operating Systems. The installation procedure described in this section is based on a typical installation using MS Windows XP or Version 7. The procedure for installing Sign-Show is the same regardless of the operating system version.

Insert the Sign-Show software CD into your PC's CD/DVD drive. The installation should begin automatically, however some PC security and anti-virus software may block files from using the autorun feature of this installation program. If the installation does not begin automatically, use Windows Explorer (Not Internet Explorer), and open the file setup.exe from the CD drive manually.



To Open Windows Explorer using XP, right click the Start Button and select Explore, Windows 7 users can select the folder icon from the system tray (Screen Bottom)

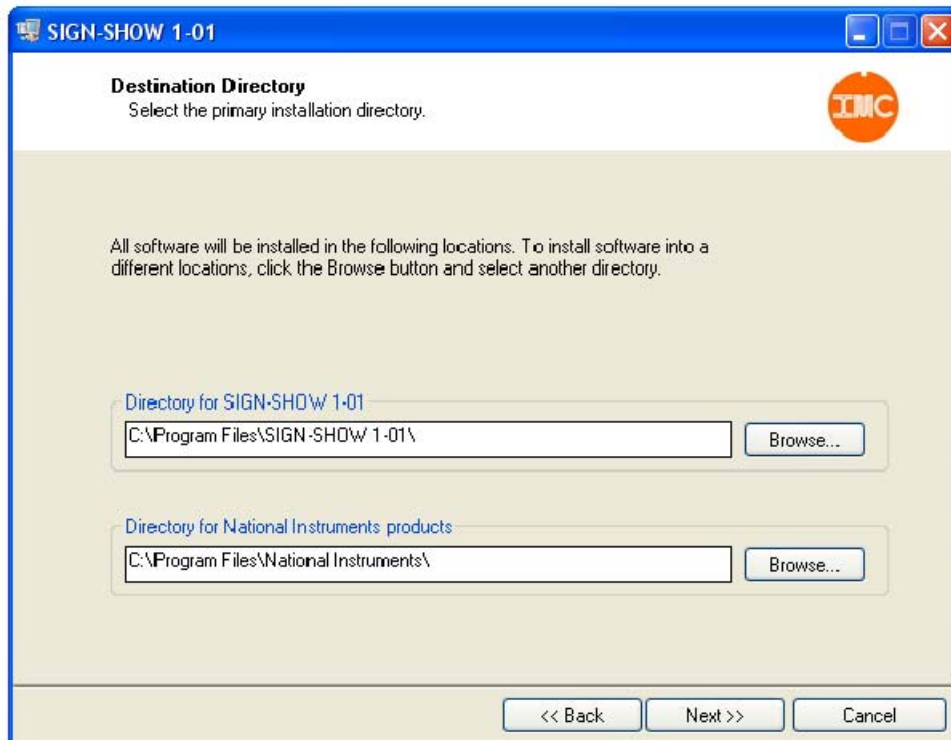
Select the CD/DVD drive and open (double click) setup.exe



The Sign-Show installation start-up dialog should appear, followed by the Destination Folder dialog.



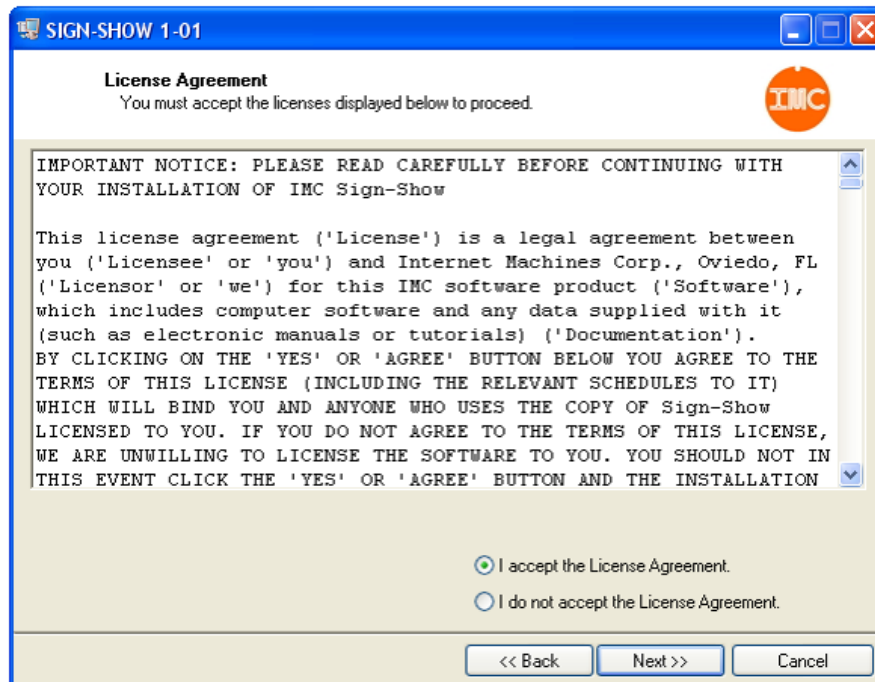
(Start-up Dialog)



(Destination Directory Dialog)

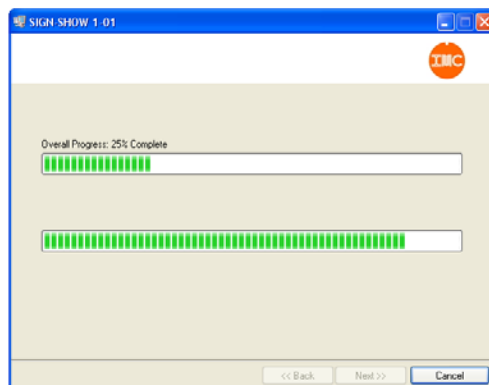
IMC recommends using the default Destination Directories although you may select any folder available on your PC to install the Sign-Show software app.

Please accept the license terms for both IMC's Sign-Show and the software plug-in provided by National Instruments.

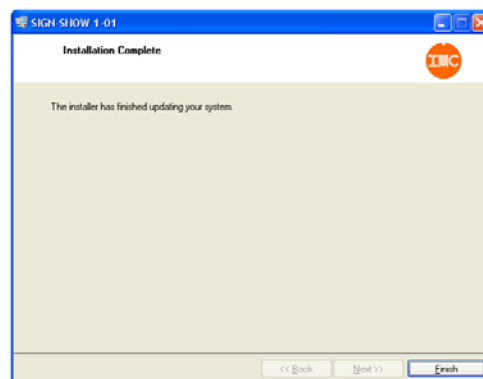


(IMC Software License Dialog)

After confirming the installation settings, the Progress Bar dialog will appear followed by the Installation Complete dialog. Sign-Show is now ready for use.



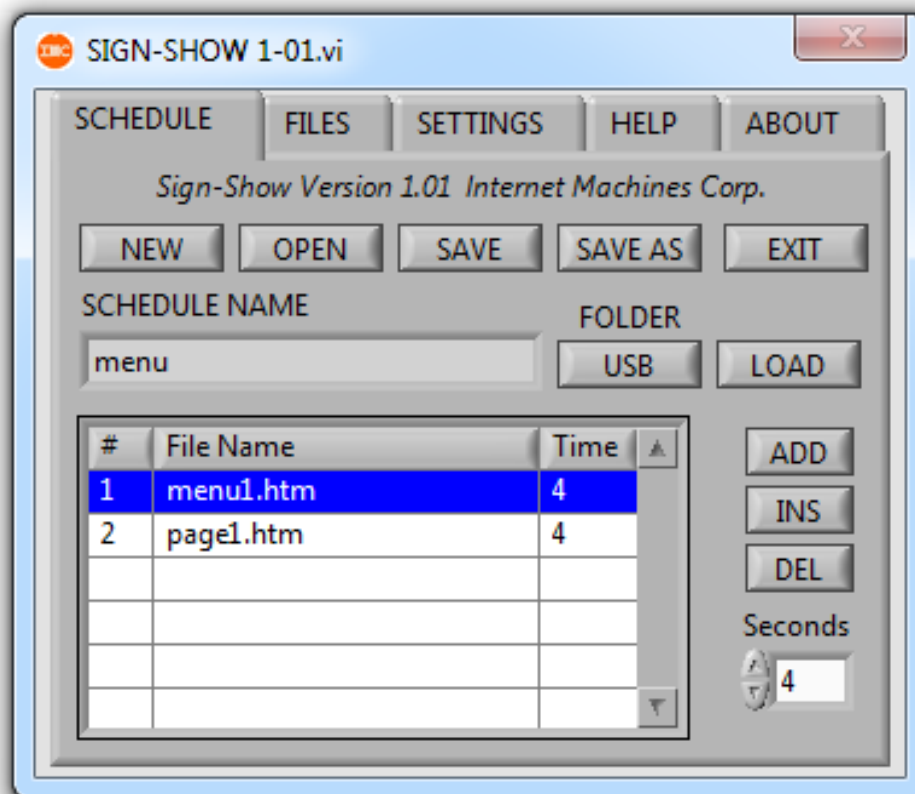
(Progress Dialog)



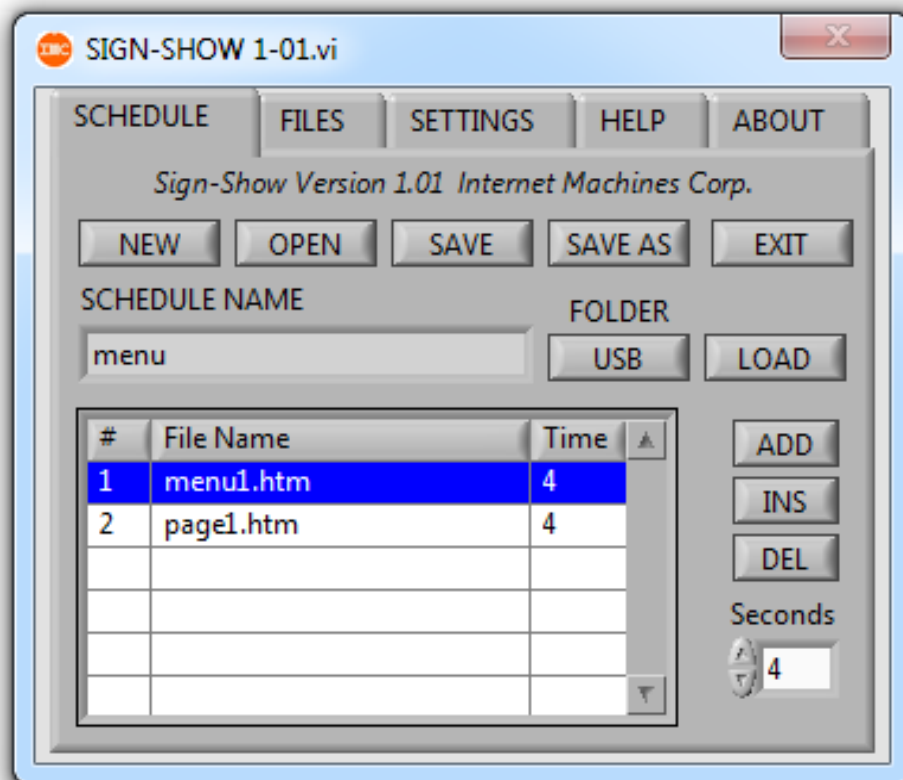
(Installation Complete Dialog)

2. Sign-Show Slideshows

Sign-Show slideshows are created by adding content files to a list, selecting the display times for the files, and uploading the files to an internet server or the USB stick provided with your SignAll Display System. The list of files in your slideshow, and their display times, is stored in the file named in the Schedule Name window. Schedules can be opened at any time to re-load the files in the schedule or to make changes such as adding or deleting files from the list or modifying the time delays. Note* The files used in the schedule must be located in the same folder they were in when the schedule was created. If your files have moved, you must delete them from the schedule list and re-add them from their new location on your PC.



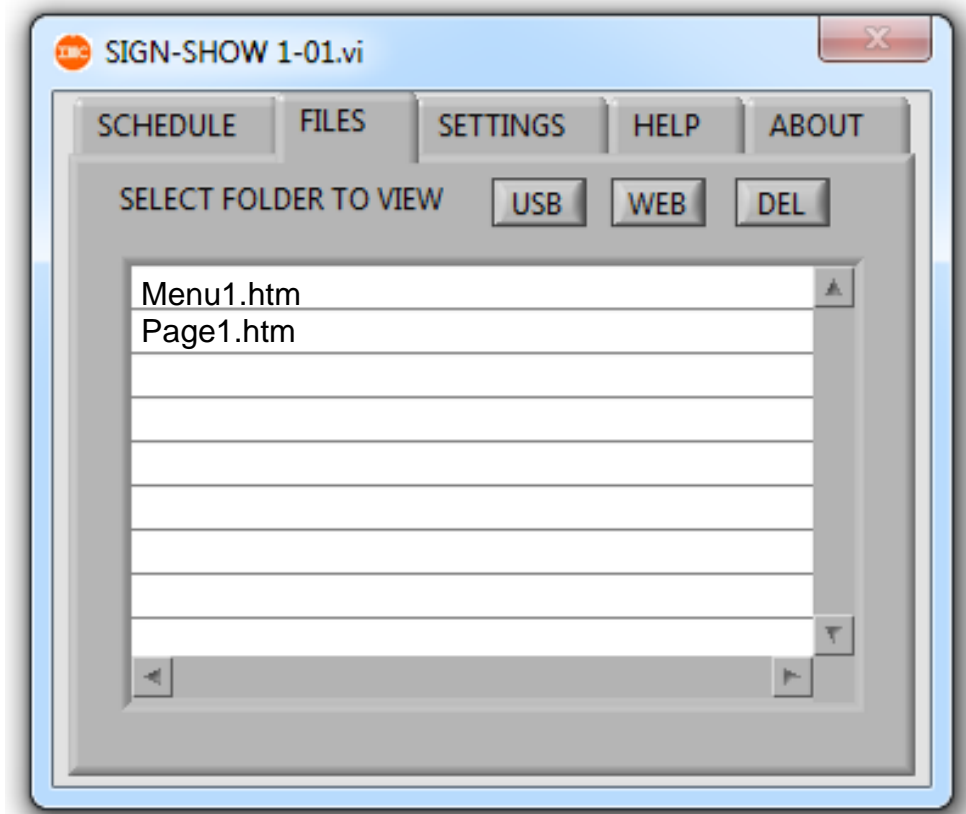
After creating or opening a Schedule file, use the Folder button to select USB stick or Internet server storage. Insert the USB stick provided with your SignAll Display System into your PC and select load. You must install the USB stick into your PC when loading files even if you select internet storage to direct the SignAll Display System to load the first file in your slideshow. Sign-Show will automatically overwrite files with the same name as files in your list.



Sign-Show slideshows may contain as many files as allowed by storage (ie. USB stick space) or may be one file. Schedule settings can be changed at any time and can be renamed using the Save As button. Please contact IMC for assistance with internet hosting accounts and support.

3. File Maintenance

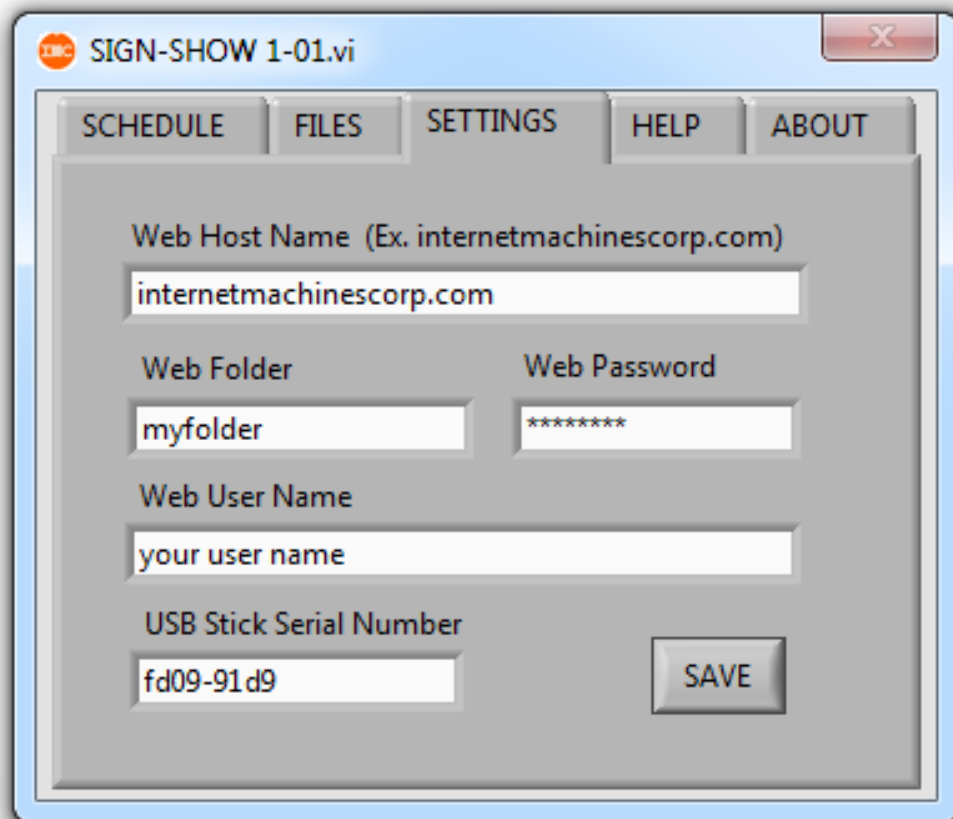
The Files tab on the Sign-Show dialog allows you to view the SignAll Display files located on the USB stick or on the internet server and to delete files that are no longer needed or to create storage space for new files.



4. Internet & USB Storage

Along with the previous description of USB stick and internet server storage functions, the Sign-Show software app. needs information on the USB stick and internet server. In the Settings tab of the Sign-Show dialog, enter

the name of your internet server, folder, user name and password. Skip this step if you are not using an internet server for storage. Enter the serial number of the USB stick provided with your SignAll Display System and save the settings.



The image shows a software window titled "SIGN-SHOW 1-01.vi" with a menu bar containing "SCHEDULE", "FILES", "SETTINGS", "HELP", and "ABOUT". The "SETTINGS" tab is active. The window contains several input fields and a "SAVE" button. The fields are: "Web Host Name (Ex. internetmachinescorp.com)" with the value "internetmachinescorp.com"; "Web Folder" with the value "myfolder"; "Web Password" with the value "*****"; "Web User Name" with the value "your user name"; and "USB Stick Serial Number" with the value "fd09-91d9".

When you select Load from the Schedule tab, Sign-Show automatically stores your files to the USB stick or an internet server and modifies the startup file on the USB stick based on the settings above. Storage space on the provided USB stick is 64Mb, which is enough space for up to forty files, depending on the size and amount of graphics. Contact IMC for internet hosting package options.